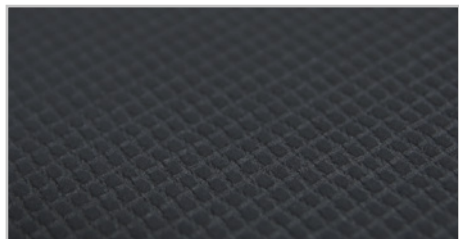




more structure



- final polishing
- oxide suspensions
- alumina



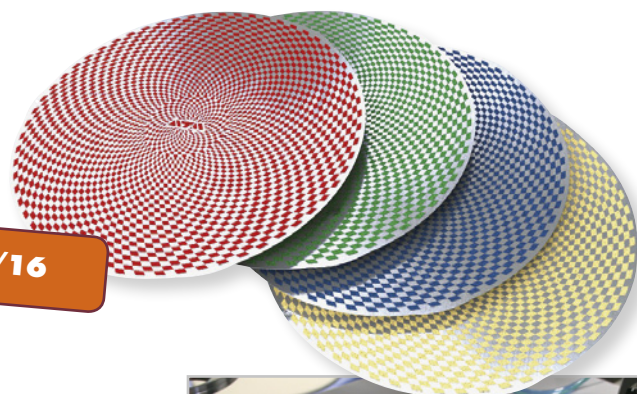
The new polishing cloth **Lambda** with its special surface structure is a universal synthetic cloth for final polishing.

The checked pattern prevents large specimens from easily being sucked onto the cloth and the highly liquid suspension will stay longer on the surface.

	Ø 200 mm	Ø 250 mm	Ø 300 mm
SELF-ADHESIVE	95003597	95003598	92003599
MAGNETIC	9503600	95003601	95003611

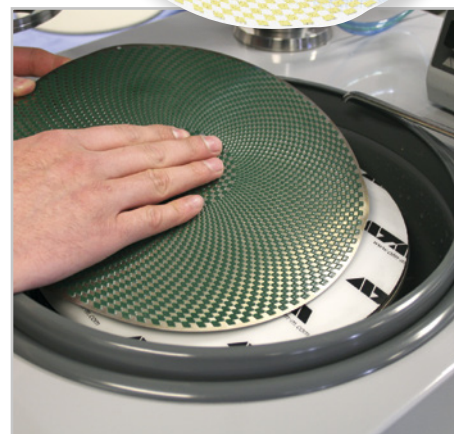
price advantage

prices available from 01/16



Modernizing of our production process of the **Galaxy-grinding and polishing discs** enables us to bring out a worthwhile price advantage.

Tips for optimal handling of the Galaxy-disks can be found on our website, or www.youtube.com/watch?v=d872x1s6Ttk



µm	125				46			26		15	
FEPA	80	120	180	240	320	400	500	600	800	1000	
Galaxy	RED		GREEN			BLUE		YELLOW			
	120		30								
Ra* µm	1		0.3			0.07		0.05			

* approx. achievable surface roughness by using water